

RESTEK

2021.3

ESSENTIALS



Fox Scientific, Inc.

Faster Trace-Level Analysis of Acrylamide in Drinking Water and Food with Allure Acrylamide LC Columns

Two column formats for optimal application-specific performance.



Faster Analyses, Maximized Instrument Uptime

Analyze Pesticides 3x Faster with LPGC Restek's Preassembled Column Kit Simplifies Set Up

Factory-coupled, leak-free kit makes setting up LPGC as simple as a column change.



Topaz
INLET LINERS

Topaz GC inlet liners feature revolutionary technology and inertness to deliver the next level of:

Deactivation | Reproducibility | Productivity



Pure Chromatography

www.restek.com

Streamline Cannabinoid Analyses with Our New 9-Component Neutrals Mix

- Nine-component mix simplifies calibration complexity—saving time and reducing cost.
- High concentration adds additional flexibility in constructing calibration curves.

Our cannabinoid neutrals mix is a certified reference material (CRM), manufactured and QC-tested in Restek's ISO-accredited labs. Verified composition and stability, with two independently produced lots available, help satisfy your ISO requirements.

U.S. DEA-exempted formulation—no additional customer permits or licensing are required to purchase within the U.S.

Cannabinoid Neutrals Mix

(9 components)

Cannabichromene (CBC) (20675-51-8)
 Cannabicyclol (CBL) (21366-63-2)
 Cannabidiol (CBD) (13956-29-1)
 Cannabidivarin (CBDV) (24274-48-4)
 Cannabigerol (CBG) (25654-31-3)

Cannabinol (CBN) (521-35-7)
 d8-Tetrahydrocannabinol (d8-THC) (5957-75-5)
 d9-Tetrahydrocannabinol (d9-THC) (1972-08-3)
 Tetrahydrocannabivarin (THCV) (31262-37-0)

Conc. in Solvent	CRM?	DEA Status	Canadian Test Kit Registration	Min Shelf Life on Ship Date	Max Shelf Life on Ship Date	Shipping Conditions	Storage Temp.	qty.	cat.#
1000 µg/mL, P&T Methanol, 1 mL/ampul	Yes	Exempt	C.T.K.# 003-004	6 months	24 months	On Ice	-20 °C or colder	ea.	34132



Reference Standards for Terpenes Profiling Analysis

- Formulated to contain the major terpenes analyzed by cannabis labs.
- Prepared in two separate multicomponent mixes to maximize stability.
- Comprehensive blends minimize time spent preparing standards for marijuana analysis.
- High concentration (2500 µg/mL) solutions provide value and maximize flexibility.

Cannabis Terpenes Standard #1

(19 components)

Conc. in Solvent	CRM?	Min Shelf Life on Ship Date	Max Shelf Life on Ship Date	Shipping Conditions	Storage Temp.	qty.	cat.#
2500 µg/mL each in isopropanol, 1 mL/ampul	Yes	6 months	24 months	Ambient	0 °C or colder	ea.	34095

Cannabis Terpenes Standard #2

(2 components)

Conc. in Solvent	CRM?	Min Shelf Life on Ship Date	Max Shelf Life on Ship Date	Shipping Conditions	Storage Temp.	qty.	cat.#
2500 µg/mL each in isopropanol, 1 mL/ampul	Yes	6 months	24 months	Ambient	0 °C or colder	ea.	34096

Accurately Quantify 380 Pesticides Using LC-MS/MS and GC-MS/MS with Restek's Multiresidue Pesticide CRM Kits

- Comprehensive lists of pesticides of global concern.
- Formulated for maximum long-term stability.
- Manufactured and QC tested in our ISO-accredited labs.



LC Multiresidue Pesticide Kit

Conc. in Solvent	CRM?	Min Shelf Life on Ship Date	Shipping Conditions	Storage Temp.	qty.	cat.#
Contains 1 mL each of these mixtures.	Yes	6 months	Ambient	-20 °C or colder	kit	31971

GC Multiresidue Pesticide Kit

Conc. in Solvent	CRM?	Min Shelf Life on Ship Date	Shipping Conditions	Storage Temp.	qty.	cat.#
Contains 1 mL each of these mixtures.	Yes	6 months	Ambient	10 °C or colder	kit	32562

Full compound lists and transition tables are available at www.restek.com/multiresidue



Custom Flexibility with Restek Reference Standards



- More than 1/3 of the ampoules that leave our facility are custom orders—almost all are certified reference materials (CRMs).
- ISO accreditation covers our catalog standards and your custom orders.
- Feasibility verification for every order.
- Top-quality, highly stable product whether it's a stock, off-the-shelf standard or a one-of-a-kind, custom-formulated solution.

Order custom reference standards today by contacting your local Restek representative or by visiting www.restek.com/solutions



Analyze Pesticides 3x Faster with LPGC— Restek's Preassembled Column Kit Simplifies Set Up

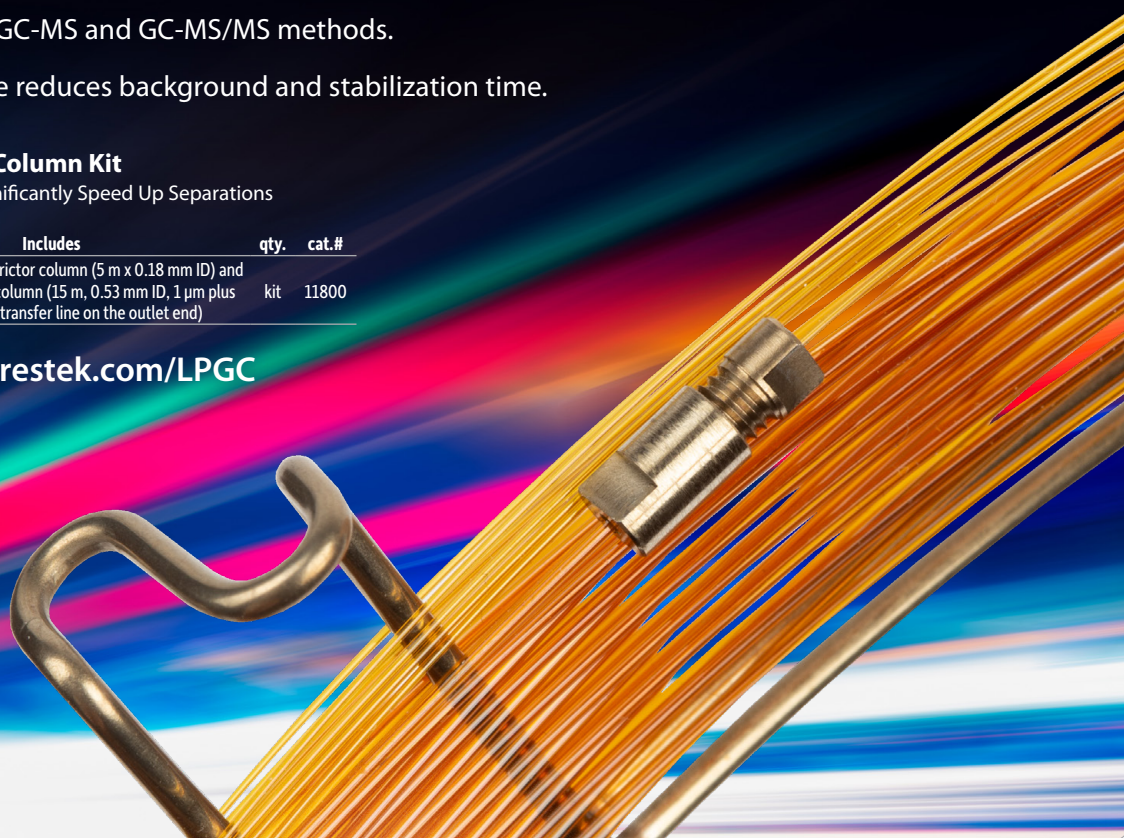
- Factory-coupled, leak-free kit makes setting up LPGC as simple as a column change.
- Ideal for speeding up GC-MS and GC-MS/MS methods.
- Integrated transfer line reduces background and stabilization time.

Low-Pressure GC (LPGC) Column Kit

Leverage Your MS Vacuum to Significantly Speed Up Separations

Temp. Limits	Includes	qty.	cat.#
-60 to 340/340 °C	Factory-coupled restrictor column (5 m x 0.18 mm ID) and Rtx-5ms analytical column (15 m, 0.53 mm ID, 1 µm plus 1 m integrated transfer line on the outlet end)	kit	11800

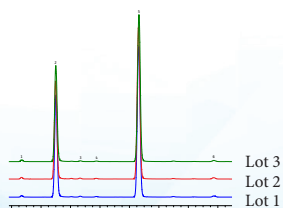
Learn more at www.restek.com/LPGC



The Next Level of True Blue Reproducibility and Performance

- **Reproducibility**—unbeatable manufacturing controls and QC testing for superior reliability across compound classes.
- **Productivity**—unparalleled cleanliness for maximized GC uptime and lab throughput.
- **Deactivation**—unbelievably low breakdown for accurate and precise low-level GC analyses.

You can expect the same great results from one lot to the next with Topaz GC inlet liners



Featured Topaz Liners:

Agilent

Split Injection: 23305 | 23300
Splitless Injection: 23303 | 23302

PerkinElmer

Split Injection: 23450 | 23449
Splitless Injection: 23451

Sciex/Bruker/Varian

Split Injection: 23328
Splitless Injection: 23332 | 23331

Shimadzu

Split Injection: 23319 | 23320
Splitless Injection: 23336 | 23322

Thermo Scientific

Split Injection: 23444 | 23267
Splitless Injection: 23447 | 23446



Learn more and find our full selection at www.restek.com/topaz

Dynamic Duo

Restek's Leak Detector and ProFLOW 6000 Flowmeter An Unbeatable Combination

Protect your instrument and improve data quality with this powerful pair from Restek. Checking for leaks and verifying flows before you start helps you avoid costly problems later.

Electronic Leak Detector

Redesigned and better than ever, our new leak detector is an essential tool for troubleshooting and routine maintenance of your gas chromatograph. Don't risk damaging your system or losing sensitivity; check for leaks often and protect your GC column and instrument with a Restek leak detector!

ProFLOW 6000 Flowmeter

With its wide range of capabilities, the ProFLOW 6000 flowmeter simplifies gas flow measurement in the lab. Real-time measurements can be made for various types of flow paths, including continually changing gas types.



Dynamic Duo (Restek Leak Detector and ProFLOW 6000 Flowmeter)

Description	Includes	qty.	cat.#
Dynamic Duo Combo Pack (Restek Leak Detector and ProFLOW 6000 Flowmeter)	Restek Electronic Leak Detector (cat.# 28500) & ProFLOW 6000 Flowmeter (cat.# 22656)	kit	22654

Learn more at www.restek.com/dynamic-duo



Leverage the outstanding inertness, low bleed, and high reproducibility of Rxi 3-in-1 technology to gain:

- Accurate Data
- The Right Results Fast
- Maximized Instrument Uptime

Easily select a perfectly matched Rxi GC column from our wide selection of stationary phases that span the polarity range.

Visit www.restek.com/rxi to order your Rxi column today!

NEW Siltek-Treated MXT Guard/ Retention Gap/Transfer Lines

Ideal for most high-temperature applications and solvents



Siltek-Treated MXT Guard/Retention Gap Columns/Transfer Lines (passivated stainless steel)

ID	Length	qty.	cat.#
0.28 mm	5 m	ea.	70026
	10 m	ea.	70036
	15 m	ea.	70056
	30 m	ea.	70066
0.53 mm	5 m	ea.	70028
	10 m	ea.	70038
	15 m	ea.	70058
	30 m	ea.	70068

Hassle-Free Cartridge Changes, When They Need Changing

- High-purity output ensures 99.9999% pure gas (at max. flow of 2 L/min).
- Glass inside to prevent diffusion, polycarbonate housing outside for safety.
- The indicator code is shown on every trap so there is no confusion determining when a trap needs to be replaced.



22019

Restek Super Clean Gas Filter Kits

Description	Includes	Fittings	Used with	cat.# / kit
Carrier Gas Cleaning Kit	Mounting Baseplate; 1/8" Inlet/Outlet Fittings; and Oxygen/Moisture/Hydrocarbon Triple Gas Filter			22019
Fuel Gas Purification Kit	Mounting Baseplate; 1/8" Inlet/Outlet Fittings; and Hydrocarbon/Moisture Fuel Gas Filter			22021
Gas Filter Bundle Kit	Triple Gas Filter (1), (cat.# 22020); and Fuel Gas Filters (2), (cat.# 22022)			22031
Helium-Specific Carrier Gas Cleaning Kit	Mounting Baseplate; 1/8" Inlet/Outlet Fittings; and Oxygen/Moisture/Hydrocarbon Helium-Specific Filter			21983
Super Clean Combi (CO ₂ , Sulfur, Moisture) Filter Kit	Replacement CO ₂ , Sulfur, Moisture Filter, Baseplate with 1/4" Brass Fittings	1/4" Brass	Ideal for TOC analyzers and zero air generators.	23844
	Replacement CO ₂ , Sulfur, Moisture Filter, Baseplate with 1/8" Brass Fittings	1/8" Brass	Ideal for TOC analyzers and zero air generators.	23845
	Replacement CO ₂ , Sulfur, Moisture Filter, Baseplate with 1/4" SS Fittings	1/4" Stainless Steel	Ideal for TOC analyzers and zero air generators.	23846
	Replacement CO ₂ , Sulfur, Moisture Filter, Baseplate with 1/8" SS Fittings	1/8" Stainless Steel	Ideal for TOC analyzers and zero air generators.	23847

Note: Restek replacement filters fit all cartridge filter baseplates regardless of manufacturer. However, if the baseplate was manufactured by Agilent or Varian, the retaining nut that came with the original filter will not work and will require a universal ring nut. Please contact customer service to receive a complimentary universal ring nut.

Strong as Steel, Inert as Glass

Put the Power of Restek Packed Columns to Work for You

We offer a broad range of common phases as well as application-specific products developed for light hydrocarbon analysis, sulfurs, permanent gases, and ASTM Method D3606.

- Inertness of glass and the durability of stainless steel.
- Short conditioning times, low bleed, and long column lifetimes.
- Reliable, predictable results.

Need help choosing?

Whether one of our stock columns is perfect, or you need a custom, we can help you choose your next packed column by USP nomenclature, application, and more.

Learn more at www.restek.com/packedGC



23073

ETP Electron Multipliers for Mass Spectrometry

- Proprietary specialized surface material resulting in very high secondary electron emission.
- Air stable.
- Two-year shelf life guarantee.
- Discrete dynode design results in extended operating life.

Instrument	qty.	cat.#
for Agilent 5971, 5972, GC GC-MS	ea.	23073
for Agilent 5973 & 5975 GC-MS (includes mount for initial installation)*†	ea.	23074
for Agilent 5973 & 5975 GC-MS and LC-MSD (Replacement Multiplier)*†	ea.	23075

*Note: The electron multipliers have been specifically developed to retrofit the original manufacturer's equipment. The detector incorporates a modular design to facilitate ease of replacement and additional innovations intended to enhance performance. First-time installation requires a mount that includes the mechanical housing. After initial installation, only the replacement electron multiplier is required.

†This unit is designed for use in the 5975, 5973 GC, and the LC-MSD (not for 5975C Triple Axis Detector).

Faster Trace-Level Analysis of Acrylamide in Drinking Water and Food with Allure Acrylamide LC Columns

Unique column chemistry reliably separates acrylamide from matrix interferences, and our new format for large volume injection lets you reach sensitivity requirements without time-consuming SPE preconcentration.

Two Column Formats for Optimal Application-Specific Performance:



- 50 x 2.1 mm for faster analysis times and fewer column changes for food and drinking water with SPE sample prep.

ID	Length	qty.	cat.#
2.1 mm	50 mm	ea.	9167552



- 150 x 3.0 mm for using large volume injection to meet ppt-level sensitivity requirements for drinking water without SPE.

ID	Length	qty.	cat.#
3.0 mm	150 mm	ea.	916756E

Trident filter and guard cartridge holders are also available at www.restek.com/trident



Allure Guard Cartridges

Description	Particle Size	Size	qty.	cat.#
Allure Acrylamide Guard Cartridge	5 µm	10 x 2.1 mm	3-pk.	916750212 NEW!

Acrylamide Reference Standards

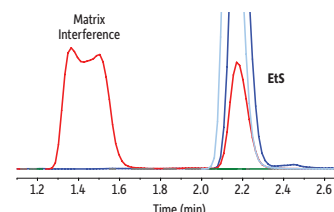
Description	CAS #	Conc. in Solvent	CRM?	Min Shelf Life on Ship Date	Max Shelf Life on Ship Date	Shipping Conditions	Storage Temp.	qty.	cat.#
Acrylamide	79-06-1	1,000 µg/mL in methanol, 1 mL/ampul	Yes	6 months	24 months	Ambient	0 °C or colder	ea.	30494
Acrylamide-d3	122775-19-3	500 µg/mL in acetonitrile, 5 mL/ampul	Yes	6 months	24 months	Ambient	10 °C or colder	ea.	30153

Struggling with EtG/EtS matrix interferences? Here's your solution!

Raptor EtG/EtS

All Matrix Interferences Resolved

Restek's EtG/EtS solution consistently resolves analytes away from matrix interferences in a fast, 4-minute, dilute-and-shoot method.



Raptor EtG/EtS LC Column

ID	Length	qty.	cat.#
2.1 mm	100 mm	ea.	9325A12

UltraShield UHPLC PreColumn Filter

Description	Porosity	qty.	cat.#
UltraShield UHPLC PreColumn Filter	0.2 µm frit	ea.	25809

EtG and EtS Standards

Description	CAS #	Conc. in Solvent	CRM?	Min Shelf Life on Ship Date	Max Shelf Life on Ship Date	Shipping Conditions	Storage Temp.	cat.# / ea.
Ethyl-β-D-glucuronide (EtG)	17685-04-0	1,000 µg/mL in methanol, 1 mL/ampul	Yes	6 months	36 months	Ambient	0 °C or colder	34101
Ethyl-β-D-glucuronide-d5 (EtG-d5)	1135070-98-2	1,000 µg/mL in methanol, 1 mL/ampul	Yes	6 months	36 months	Ambient	0 °C or colder	34102
Ethyl sulfate sodium salt (EtS)	546-74-7	1,000 µg/mL in methanol, 1 mL/ampul	Yes	6 months	36 months	Ambient	0 °C or colder	34103
Ethyl sulfate-d5 sodium salt (EtS-d5)	1329611-05-3	1,000 µg/mL in methanol, 1 mL/ampul	Yes	6 months	36 months	Ambient	0 °C or colder	34104



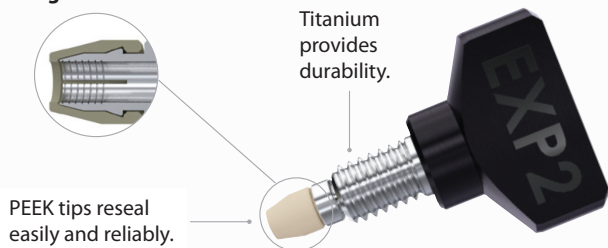
EXP and EXP2 Fittings

Reusable Fittings for Easy, Reliable HPLC & UHPLC Connections

- Can be installed repeatedly without compromising high-pressure seal.
- Non-swaged ferrules mean vendor-specific tubing is not required.
- Precision design provides zero-dead-volume (ZDV) connection to any 10-32 female port.



Integrated Ferrule



NEW! EXP2 TI-LOK All-in-One (AIO) Reusable Fittings

Integrated ferrule simplifies installation—no more lost ferrules

Description	qty.	cat.#
EXP2 TI-LOK All-in-One (AIO) Hand-Tight Fitting with Integral Ferrule (includes built-in driver) for 10-32 fittings and 1/16" tubing	ea.	25745
	10-pk.	25746

EXP2 Reusable Fittings

for 10-32 fittings and 1/16" tubing

Description	qty.	cat.#
EXP2 Fitting (2 nuts, 2 ferrules, 1 driver)	2-pk.	25783
EXP2 Fitting (10 nuts, 10 ferrules, 1 driver)	10-pk.	25784
EXP2 Driver (driver only)	ea.	25785

EXP Reusable Fittings

for 10-32 fittings and 1/16" tubing

Description	qty.	cat.#
EXP Hand-Tight Fitting (nut w/ferrule)	ea.	25937
	10-pk.	25938
EXP Std. Hex-Head Fitting (nut w/ferrule)	ea.	25926
	10-pk.	25927
EXP Short Hex-Head Fitting (nut w/ferrule)	ea.	25928
	10-pk.	25929
EXP Long Hex-Head Fitting (nut w/ferrule)	ea.	25930
	10-pk.	25931
EXP Titanium Hybrid Ferrule	ea.	25935
	10-pk.	25936

WARNING: Do not use EXP ferrules with standard nuts. Failure to use EXP fittings according to the included instructions may result in unsafe UHPLC connections and/or non-ZDV connections. Intellectual Property: optimizetech.com/patents

Learn more at www.restek.com/EXP

HPLC Survival and Performance Kits

- Survival kits—for start-up and maintenance in all HPLC systems.
- HPLC PEEK performance kit—a useful complement to your HPLC system.

Survival Kit for HPLC, Stainless Steel

Description	qty.	cat.#
Survival Kit for HPLC	kit	25097

Survival Kit for HPLC, PEEK

Description	qty.	cat.#
Survival Kit for HPLC	kit	25322

HPLC PEEK Performance Kit

Description	qty.	cat.#
HPLC PEEK Performance Kit	kit	26394




25322



Simultaneously Remove Phospholipids and Proteins in One Resprep PLR Procedure

- Prevent signal suppression.
- No analyte-specific method development.
- Minimize contamination and maintenance.

Description	qty.	cat.#
Resprep PLR SPE Cartridge, 25 mg/1 mL cartridge	100-pk.	28300
Resprep PLR SPE 96-Well Plate, 25 mg/2 mL each well	ea.	28301



Novel co-sintered frit and sorbent design prevents channeling for high well-to-well flow rate consistency.

Learn more about Resprep PLR products at www.restek.com/PLR

Get a Quicker Cleanup: Resprep SLE Cartridges and 96-Well Plates

- Just load, wait 5 min, then elute.
- Removes proteins, phospholipids, and salts.



Description	qty.	cat.#
Resprep SLE cartridges, 200 mg/3 mL cartridge	50-pk.	28302
Resprep SLE cartridges, 400 mg/3 mL cartridge	50-pk.	28303
Resprep SLE 96-well plates, 200 mg/2 mL each well	1-pk.	28304
Resprep SLE 96-well plates, 400 mg/2 mL each well	1-pk.	28305

Learn more at www.restek.com/ResprepSLE

Resprep Quick-Replace SPE Vacuum Manifolds



Description	Size	qty.	cat.#
Resprep QR-12 Quick-Replace vacuum manifold	12-port	kit	28298-VM
Resprep QR-24 Quick-Replace vacuum manifold	24-port	kit	28299-VM

Order today at www.restek.com/ResprepQR



New! Q-sep Multispeed Centrifuge for QuEChERS

- Program 10 custom cycles for time, braking, and speed or g-force (up to 4500 rpm or 3450 xg).
- QuEChERS-specific presets for AOAC and EN methods make consistent operation quick and simple.
- Lid lighting indicates at a glance if unit is ready, running or done.
- Cool-Flow design prevents samples from overheating.



Includes	Certification/Compliance	qty.	cat.#
15 mL four-place tube holder (6); 50 mL single-place tube holder (6); 50 mL conical tube insert (6); 2 mL tube adaptors (24); U.S. power cord (1); global/universal power cord (1)	UL61010-1/CSA C22.2 No. 61010-1 and IEC61010-2-020; FDA listed; MET U.S. E112532; CE; RoHS	ea.	28295

Excellence Is Our Standard

Restek Air Valve Excellence (RAVE) valves—standard on all Restek air canisters—feature proven long life, leak-free performance (helium leak tested to 1×10^{-6} mL/sec), and effortless operation.

SilcoCan Air Sampling Canisters with RAVE Valve

Ideal for low-level reactive sulfur (5–20 ppbv), TO-14A, or TO-15 compounds

Siltek-treated canister and valve offers unsurpassed inertness, even for sulfur-containing or brominated compounds.

Modification	Volume	cat.# / ea.	Modification	Volume	cat.# / ea.	Modification	Volume	cat.# / ea.
2-Port RAVE Valve	1 L	27400	3-Port RAVE Valve with Gauge*	3 L	27406	without Valve	6 L	22092
2-Port Siltek-Treated RAVE Valve	1 L	27401	3-Port Siltek-Treated RAVE Valve with Gauge*	3 L	27407	2-Port RAVE Valve	15 L	27412
3-Port RAVE Valve with Gauge*	1 L	27402	without Valve	3 L	22091	2-Port Siltek-Treated RAVE Valve	15 L	27413
3-Port Siltek-Treated RAVE Valve with Gauge*	1 L	27403	2-Port RAVE Valve	6 L	27408	3-Port RAVE Valve with Gauge*	15 L	27414
without Valve	1 L	22090	2-Port Siltek-Treated RAVE Valve	6 L	27409	3-Port Siltek-Treated RAVE Valve with Gauge*	15 L	27415
2-Port RAVE Valve	3 L	27404	3-Port RAVE Valve with Gauge*	6 L	27410	without Valve	15 L	22093
2-Port Siltek-Treated RAVE Valve	3 L	27405	3-Port Siltek-Treated RAVE Valve with Gauge*	6 L	27411			

TO-Can Air Sampling Canisters with RAVE Valve

Optimized for Methods TO-14A, TO-15, IP-1A, ASTM D5466, OSHA PV 2120, and NJ DEP Low Level TO-15

SUMMA canister equivalent features proprietary electropolished surface that maintains compound stability.

Modification	Volume	cat.# / ea.	Modification	Volume	cat.# / ea.
2-Port RAVE Valve	1 L	27416	2-Port RAVE Valve	6 L	27420
3-Port RAVE Valve with Gauge*	1 L	27417	3-Port RAVE Valve with Gauge*	6 L	27421
without Valve	1 L	22094	without Valve	6 L	22096
2-Port RAVE Valve	3 L	27418	2-Port RAVE Valve	15 L	27422
3-Port RAVE Valve with Gauge*	3 L	27419	3-Port RAVE Valve with Gauge*	15 L	27423
without Valve	3 L	22095	without Valve	15 L	22097

*Range of standard gauge is -30 " Hg to 60 psi. | Do not exceed canister maximum pressure of 40 psig (2.75 bar).



Extend Air Canister and Valve Lifetime—RAVEqc Valves

No Wrenches Mean No Overtightening or Cross-Threading Damage



- Simplify your workflow—tool-free design makes it fast and easy for anyone to make consistent, quality connections.
- Check status at a glance—if the parts are connected, the valve is open; if they're apart, it's closed.
- Great for attaching air canisters to the wide variety of devices used to sample and analyze air samples.

Description	Material	cat.# / ea.	Description	Material	cat.# / ea.
Female RAVEqc Valve to $1/16$ " Male Compression Fitting	Stainless Steel	27341	Male RAVEqc 3-Port Valve to $1/4$ " Male Compression Fitting with Gauge	Stainless Steel	27351
	Siltek Treated	27342		Siltek Treated	27352
Female RAVEqc Valve to $1/8$ " Male Compression Fitting	Stainless Steel	27343	Male RAVEqc Valve to $1/4$ " Male Compression Fitting	Stainless Steel	27367
	Siltek Treated	27344		Siltek Treated	27368
Female RAVEqc Valve to $1/4$ " Male Compression Fitting, High-Flow, Open-Position	Stainless Steel	27345	Female RAVEqc Valve to $1/4$ " Male Compression Fitting	Stainless Steel	27369
	Siltek Treated	27346		Siltek Treated	27370
Female RAVEqc Valve to $1/4$ " Tube-End Fitting	Stainless Steel	27347	Male RAVEqc Valve to $1/4$ " Tube End Fitting, Extended (1.58")*	Stainless Steel	27371
	Siltek Treated	27348		Siltek Treated	27372
Male RAVEqc 3-Port Valve to $1/4$ " Male Compression Fitting without Gauge	Stainless Steel	27349	Male RAVEqc Valve to $1/4$ " Tube End Fitting, Short (1.23")*	Stainless Steel	27373
	Siltek Treated	27350		Siltek Treated	27374
			Female RAVEqc Valve to $1/4$ " NPT Fitting	Stainless Steel	27365
				Siltek Treated	27366

* Requires a $1/4$ " nut and ferrule set, sold separately in 5-pks. as cat.# 23161.

Introduce Your Entech Sampling Canisters to Restek Air Valve Excellence (RAVE)

- **Easy retrofit**—replace TOV and TOV-2 valves without modification!
- **Proven long life**—engineered to exceed 15,000 cycles.
- **Leak-free performance**—helium leak tested to 1×10^{-6} mL/sec.
- **Effortless operation**—finger turn for full valve closure (only 10 in-lb).



RAVEN Diaphragm Valves for Entech air sampling canisters

Description	Material	Used with	qty.	cat.#
1/4" Diaphragm Valve, RAVEn (2-Port)	Stainless Steel	Entech air sampling canisters	ea.	27376
	Siltek Treated	Entech air sampling canisters	ea.	27377
1/4" Diaphragm Valve, RAVEn (3-Port)	Stainless Steel	Entech air sampling canisters	ea.	27378
	Siltek Treated	Entech air sampling canisters	ea.	27379

RAVE and RAVEn Diaphragm Rebuild Kit

Includes	Material	qty.	cat.#
a tube of grease; two screws; a bonnet (metal ring); a button assembly (small white circular piece); and a diaphragm stack (thin metal disks)	Stainless Steel	kit	26389
a tube of grease; two screws; a bonnet (metal ring); a button assembly (small white circular piece); and a diaphragm stack (Siltek-treated thin metal disks)	Siltek Treated	kit	26390

See our full selection of air sampling products at www.restek.com/air



Quickly and Precisely Verify Vacuum/Pressure Flow Rates Before Going into the Field—Alicat Whisper Flow Calibrators

- Real-time calibration of controllers, passive sampling kits, canisters, pumps, and more.
- Measure absolute pressure, mass flow, volumetric flow, and temperature for 98 different gases.
- Available in lab-based and portable models.

Description	Certification/Compliance	Dimensions	Flow Capacity	Type	qty.	cat.#
Portable Mass Flow Calibrator, Whisper Series	CE, NIST	5.7" h x 2.4" w x 1.1" d	0–50 sccm	Color Display	ea.	27330
	CE, NIST	5.7" h x 2.4" w x 1.1" d	0–50 sccm	Monochrome Display	ea.	27331
	CE, NIST	5.7" h x 2.4" w x 1.1" d	0–500 sccm	Color Display	ea.	27332
	CE, NIST	5.7" h x 2.4" w x 1.1" d	0–500 sccm	Monochrome Display	ea.	27333
	CE, NIST	4.1" h x 2.4" w x 1.1" d	0–50 sccm	Color Display	ea.	27334
Lab-Based Mass Flow Calibrator, Whisper Series	CE, NIST	4.1" h x 2.4" w x 1.1" d	0–50 sccm	Monochrome Display	ea.	27335
	CE, NIST	4.1" h x 2.4" w x 1.1" d	0–500 sccm	Color Display	ea.	27336
	CE, NIST	4.1" h x 2.4" w x 1.1" d	0–500 sccm	Monochrome Display	ea.	27337



View more product details and a list of programmed gases at www.restek.com/alicat

Ultra-High Degassing Efficiency in a Small, Durable Unit

The DEGASi PLUS degasser employs the Systec ZHCR stepper-driven motor vacuum pump. Zero Hysteresis Constant Run (ZHCR) maintains a constant vacuum that is unaffected by varying degassing loads. This patented control strategy eliminates baseline fluctuation caused by dissolved gases and air.



DEGASi PLUS Mobile Phase Degasser

Description	Certification/Compliance	Voltage	qty.	cat.#
DEGASi PLUS Mobile Phase Degasser	CE, RoHS	110 – 240 V	ea.	25839

Two Sources of Pi-Marked Gas Calibration Standards—One Convenient Order

- Independently manufactured by two different sources; easily meet 2nd source lab requirements.
- Pi-marked cylinders available for the EU.
- Each cylinder comes with a certificate of analysis and unique serial number.

Restek provides gas calibration standards from Spectra/Linde, Airgas (formerly Scott/Air Liquide), and other gas calibration suppliers. These air standards include TO-14A, TO-15, environmental blends, Scott transportable pure gases & mixtures, natural gas, and refinery gas, as well as related accessories. We can also source custom, made-to-order gas calibration standards.

Find your gas calibration standards at www.restek.com/2ndsource



Fox Scientific, Inc.

8221 East FM 917 • Alvarado, TX 76009 • Phone: (800)369-5524 • Fax: (817)783-3571
www.foxscientific.com • sales@foxscientific.com

RESTEK
 Pure Chromatography

Questions? Contact us or your local Restek representative (www.restek.com/contact-us).

Restek patents and trademarks are the property of Restek Corporation. (See www.restek.com/Patents-Trademarks for full list.) Other trademarks in Restek literature or on its website are the property of their respective owners. Restek registered trademarks are registered in the U.S. and may also be registered in other countries. To unsubscribe from future Restek communications or to update your preferences, visit www.restek.com/subscribe To update your status with an authorized Restek distributor or instrument channel partner, please contact them directly.

© 2021 Restek Corporation. All rights reserved. Printed in the U.S.A.

www.restek.com



Lit. Cat.# GNES3540-UNV